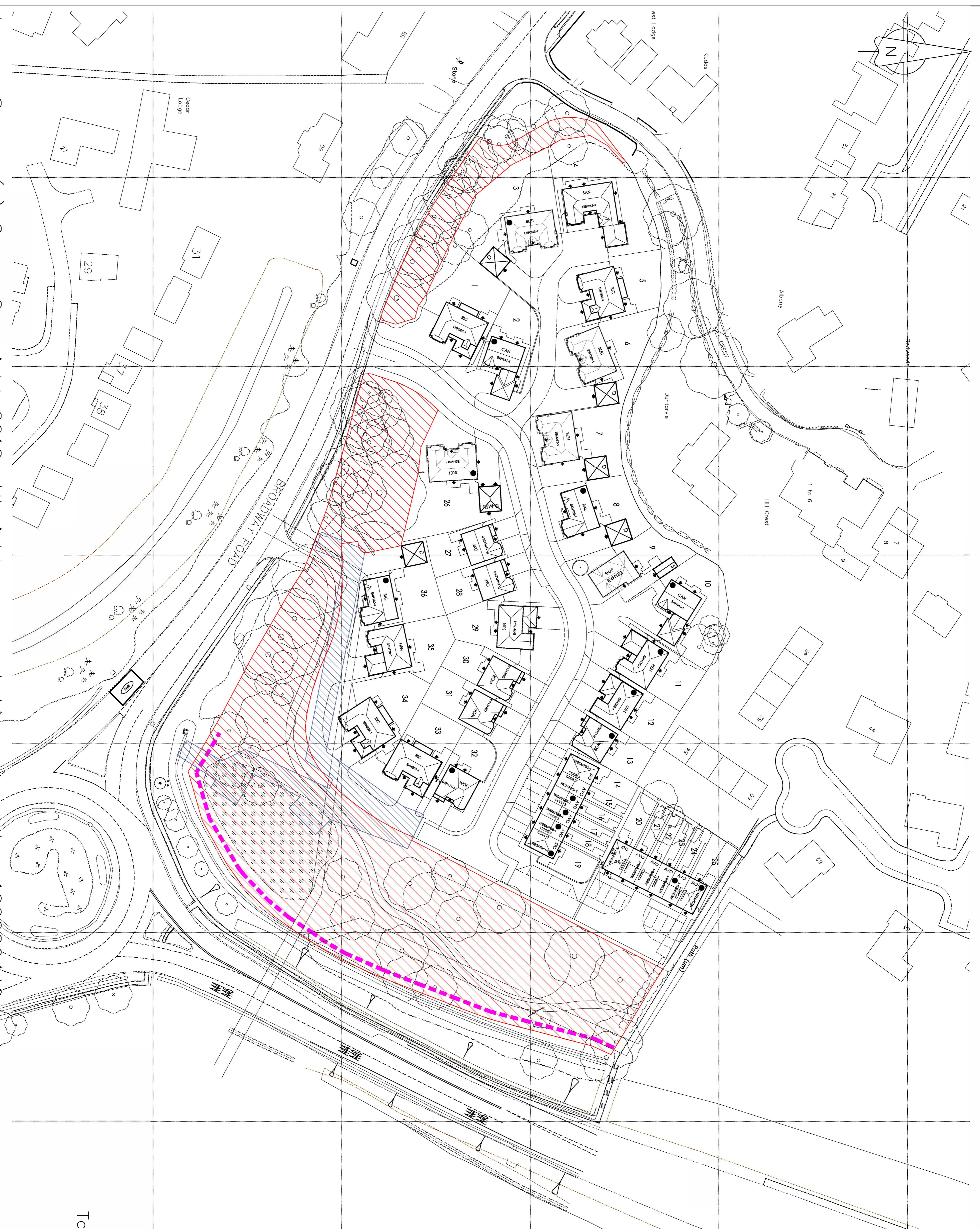


Land to be maintained by management Company.



Tor

LABURNUM GARDENS BROADWAY RD. EVESHAM

Development: BOARDWAY RD EVESHAM
Date of Issue: 16-01-14
Revision: 1/5000

ESTATE LAYOUT KEY

- Private Access
- Service Strip
- Electricity Cables
- Sewer Easement
- Visibility Splay
- Ransom Strip

MANAGEMENT PLAN

Director: _____
Director / Secretary: _____